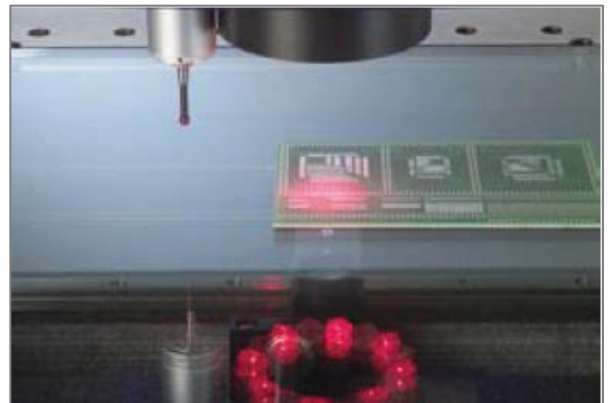
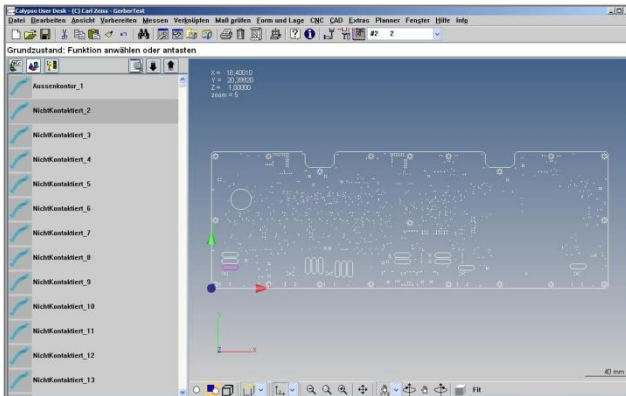


GERBER_CONVERT – Calypso® Fully automated generation of measurement plans for measurement of circuit boards

Don't be satisfied with less!



Target group

Typical users are companies operating optical / tactile coordinate measuring machines (CMM) with **CALYPSO®** measurement software and, in addition to their measurement work on conventional workpieces, also want to measure circuit boards on the CMM with a high degree of automation.

GERBER_CONVERT features:

Printed circuit boards are generally made based on data in what is known in GERBER format (layout data) and/or EXCELLON format (drill data).

The GERBER_CONVERT module reads in the available data and visualises it in the form of a graphic and table of values.

Based on the data loaded and the configuration - settings, **GERBER_CONVERT** produces a fully automated, workable **CALYPSO®** measurement plan for multi-sensor CMMs.

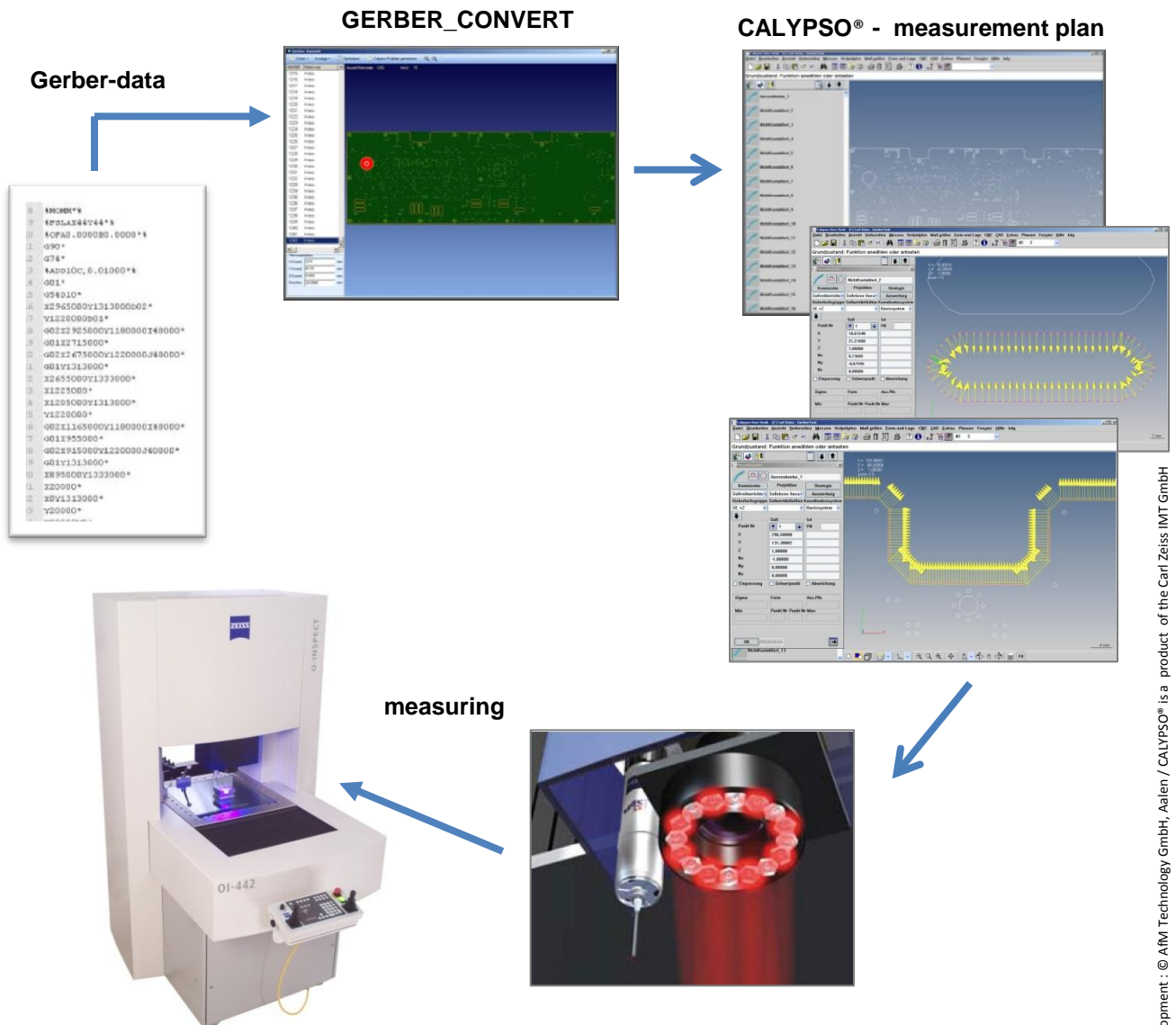
Using GERBER_CONVERT:

'Project data' is used to describe the associated data formats / files. Complete projects or individual files can be loaded into **GERBER_CONVERT**. Once loaded, the data is displayed graphically and in list form. Individual elements can either be selected in the list or from the graphic using the mouse, then visualised and localised on the board.

The integrated configuration tool is then used to define the default settings required.

- Diameter / accuracy deviations as a function of lighting, blinds and objective setting.
- Definition of search direction for scanning as a function of the predefined lighting setting (incident light / transmitted light) for the diameter ranges defined.
- Number of contour points required (for contours, only the corner points required are transmitted as standard)

AfM software solutions for quality control



The benefits to you

- **GERBER_CONVERT** generates a complete **CALYPSO®** measurement plan based on the settings.
- Individual adjustments can be made to the measurement plan generated
- Real time saving
- Optimum use of **CALYPSO®** measurement software
- Saved measurement and evaluation strategies minimise individual operator input on measurement results.

AfM
Accuracy for Machines

AfM Technology GmbH
Gartenstraße 133
73430 Aalen
Germany

Fon +49 (0) 73 61 88 96 08-0
Fax +49 (0) 73 61 88 96 08-99
www.afm-tec.com
info@afm-tec.com