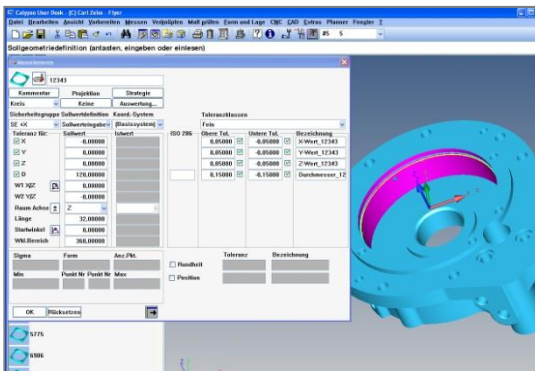


## MpDoc – Documentation of CALYPSO®- Measurement Plans

Don't be satisfied with less!

### CALYPSO®- Measurement Plan

### MpDoc



**Coordinate Systems**

**Measuring elements associated with Inspection criteria**

Element	Parameter	Min	Max	Unit	Criteria
0001_1	Z-Wert_0001_1	100.00000	7.00000	-58.00000	13.00000
0001_2	Z-Wert_0001_2	100.00000	7.00000	-58.00000	13.00000
0001_3	Z-Wert_0001_3	100.00000	7.00000	-58.00000	13.00000
0001_4	Z-Wert_0001_4	100.00000	7.00000	-58.00000	13.00000
0001_5	Z-Wert_0001_5	100.00000	7.00000	-58.00000	13.00000
0001_6	Z-Wert_0001_6	100.00000	7.00000	-58.00000	13.00000
0001_7	Z-Wert_0001_7	100.00000	7.00000	-58.00000	13.00000
0001_8	Z-Wert_0001_8	100.00000	7.00000	-58.00000	13.00000
0001_9	Z-Wert_0001_9	100.00000	7.00000	-58.00000	13.00000
0001_10	Z-Wert_0001_10	100.00000	7.00000	-58.00000	13.00000

### Target Users

- Measurement Technology Users
- Measurement Service Providers
- Measurement Planners
- Calibration Laboratories

### MpDoc Features

#### 1. Documentation:

**MpDoc** reads in complete **CALYPSO®** measurement plans and presents all relevant content for measuring in a clear table. Extensive filter functions are available allowing the user to customise the information provided in the table. Additional documentation can also be shown, (such as images) when they are assigned to individual measurement elements. The user is able save the required data as a **MpDoc** original format, EXCEL spread sheet or as a PDF file.

#### 2. Comparison of Test Plan Contents:

Different versions of a test plan can be loaded and their content compared. **MpDoc** clearly highlights all differences in the various plans for the user.

#### 3. Saving and Archiving Program Versions Loaded into MpDoc:

As well as generating a table for the user, **MpDoc** saves the loaded test plans in a compressed format. It is possible for any **CALYPSO®** test plans, loaded into **MpDoc**, to be restored at any time.

#### 4. Additional 'Digital Documentation' Option:

All related information belonging to a test plan can be collated and burned onto CD/DVD by the user. The contents of the CD/DVD can be opened by any recipient when using **MpDocviewer**. All **MpDoc** functions are available in full but restricted to the saved measurement plan.

## Comparing Inspection Plans Quickly and Easily

Differences are highlighted so they are easily identified by the user.

### User Benefits:

- The content of the measurement program is converted into a universally usable format.
- Inspection and audit-compliant documentation of CALYPSO® test plans are provided, including all filters, measurement points and measurement and evaluation strategies.
- Different program content can be selected and compared.
- User specific configuration options can be applied to check program content.
- Simple measurement coordination with customers and suppliers.
- Possible restoration of saved CALYPSO® measurement plans.
- Additional 'Digital Documentation' option on CD/DVD

**Messelemente**

Prüfplan : Flyer(V1)

MMNR : 12343 (Circle)  
 Durchm. : 120,00000  
 Bezugssystem : Basisystem  
 Strategie : Kreisabschnitt  
 Anzahl Punkte : 4  
 Antaststrategie : Taktik  
 Auswerteverfahren : Gauss  
 Startwinkel : 0,00000  
 Winkelsbereich : 360,00000  
 Messhöhe : -2,0  
 Tasterystem : STANDARD  
 Tastername : I (1)  
 Geschwindigkeit : 80  
 Einzelpunkt-Anzeige :

Prüfmerkmale:  
 X-Wert 12343  
 X-Tol : 0,05000  
 Tol U : -0,05000  
 Y-Wert 12343  
 Y-Tol : 0,05000  
 Tol U : -0,05000  
 Z-Wert 12343  
 Z-Tol : 0,05000  
 Tol U : -0,05000  
 Durchmesser 12343  
 D-Tol : 0,15000  
 Tol U : -0,15000

MMNR : 5425 (Plane)  
 Durchm. : X = 400,38544  
 Y = -4,46890  
 Z = -60,00000  
 Bezugssystem : Basisystem  
 Strategie : Einzelpunkte  
 Anzahl Punkte : 3  
 Antaststrategie : Taktik  
 Auswerteverfahren : Gauss  
 Tasterystem : STANDARD  
 Tastername : I (1)  
 Geschwindigkeit : 80  
 Einzelpunkt-Anzeige :

Prüfmerkmale:  
 X-Wert 5425 (Circle)  
 X = 400,38544  
 Y = 7,00000  
 Z = -60,00000  
 Durchm. : 12,00000

Seite 14 Programm: Calypro-Link V1.00.00.07 / 07.07.2011



**AfM Technology GmbH**

Gartenstraße 133  
 73430 Aalen  
 Germany  
 Fon +49 (0) 73 61 88 96 08-0  
 Fax +49 (0) 73 61 88 96 08-99  
 www.afm-tec.com  
 info@afm-tec.com